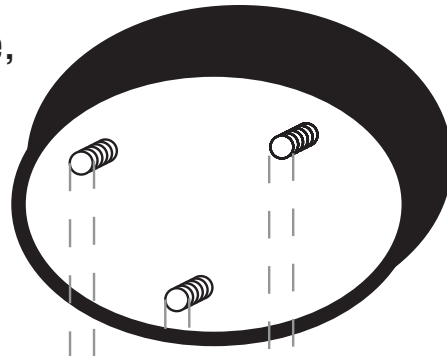
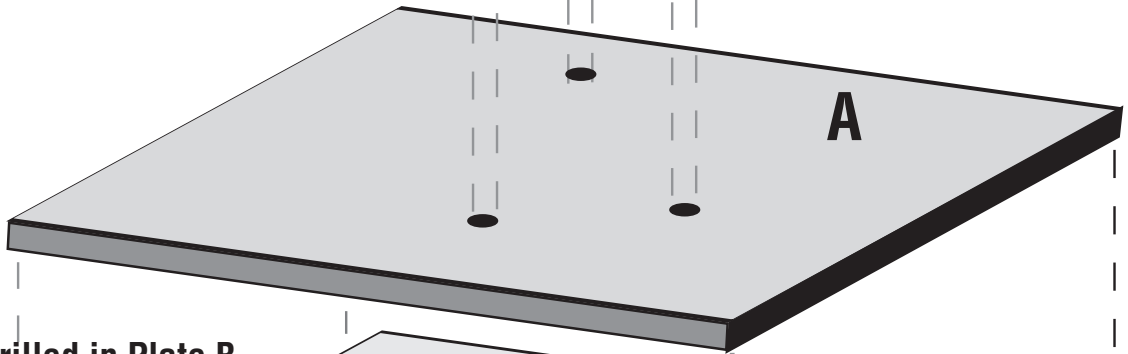


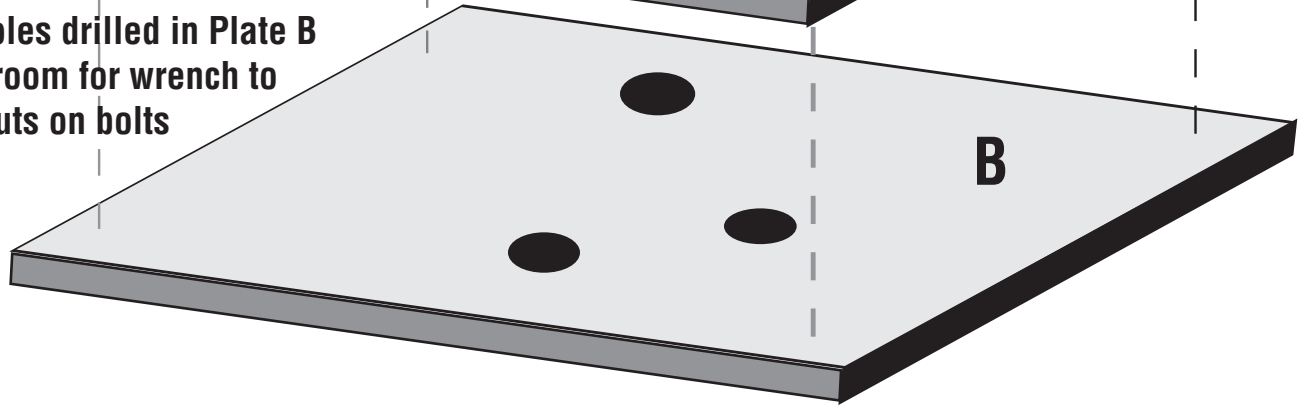
**Bolts protruding from bottom of sculpture, long enough to penetrate Plate A and attach nuts inside holes in Plate B, but not long enough to extend beyond the bottom surface of Plate B**



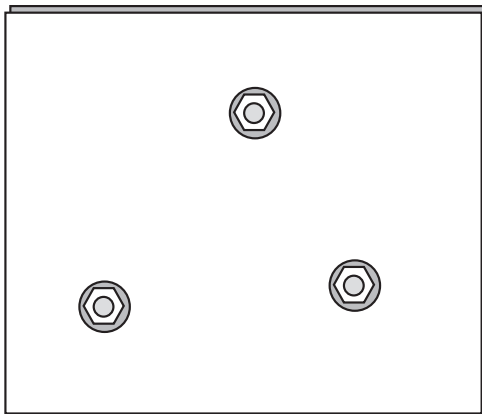
**Holes drilled in Plate A to fit bolts**



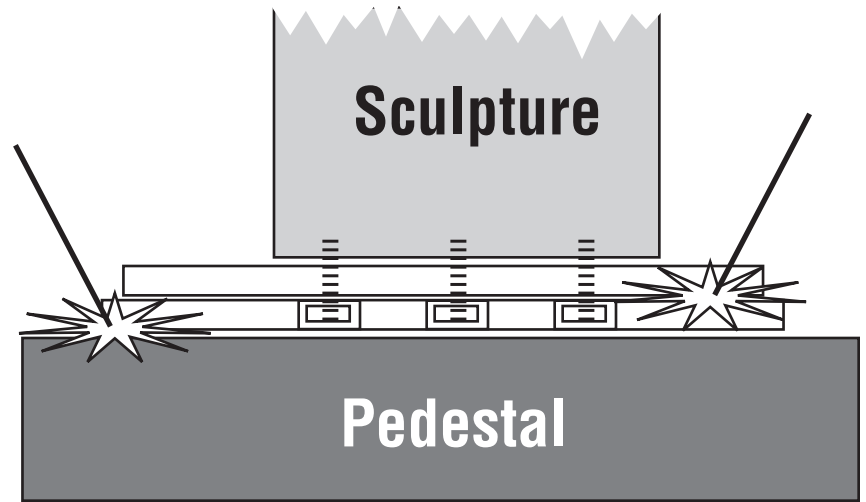
**Larger holes drilled in Plate B to allow room for wrench to tighten nuts on bolts**



**Cut-away side view:  
Plate A must be welded to Plate B, which will be welded to top of pedestal.**



**Bottom view showing bolts which penetrated holes in Plates A and B with nuts tightened on bolts inside the larger holes of Plate B.**



**Pedestal**